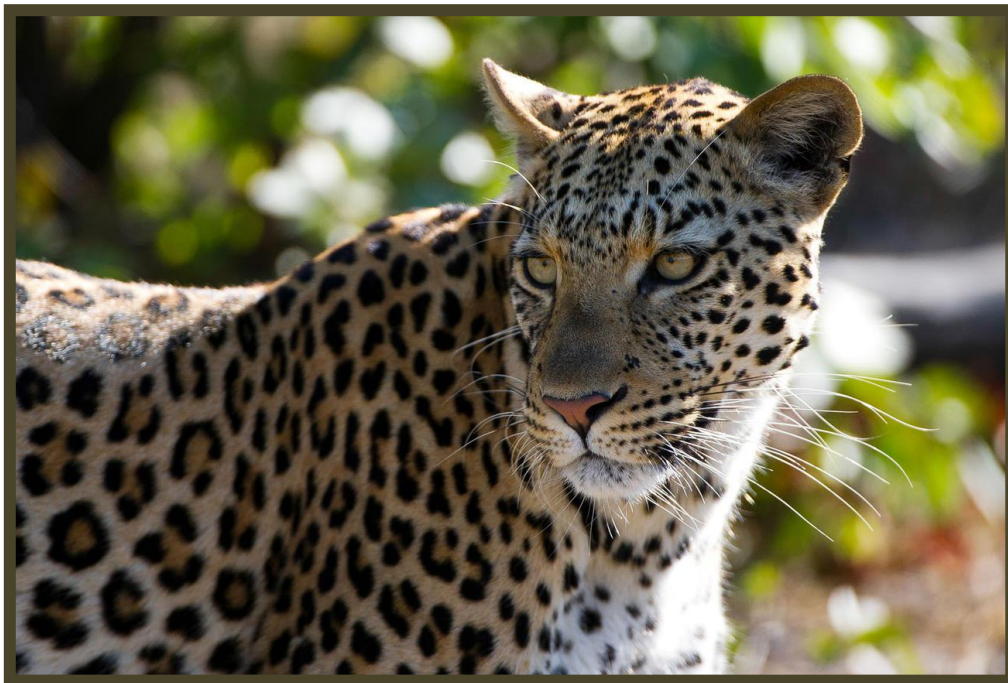


G A M E P L A N A F R I C A  
*Journeys of a Lifetime*



**BOTSWANA SUMMER ENCOUNTER**  
*A Discoverer Exploration*

**10 nights/11 days**

## **Botswana Summer Encounter**

### ***A Discoverer Exploration***

**10 nights/11 days**



**Your encounter:** This Exploration reveals the life-filled summer season of Botswana, in prime areas where few people travel. You will experience a nostalgic camping/lodge safari that recreates the sense of a game-viewing adventure reminiscent of the times of the great African explorers. The Exploration exhibits Botswana's scenic areas: The "petrified" river valley of Deception Valley in the Central Kalahari Game Reserve, the grasslands and floodplains of the Okavango Delta with its wealth of plains game, to the diverse and wildlife-rich Linyanti and Chobe River systems, ending with the world-famous Victoria Falls on the Zambian side of the Zambezi River.

**Your guide:** Explorations are led by highly skilled and qualified professional guides with an incredible passion for the natural regions they work in. Sharing the adventure and guiding you on this journey of discovery combined with their vast knowledge of the natural world, history and culture are their professions and personal hobby. Many of our guides are also skilled photographers and can assist you in taking away amazing wildlife photographs. Your guide will host you for the duration of the safari, providing you with a consistent, detailed interpretation that is shaped to your specific interests.

#### **Did you know?**

- We explore the diverse habitats of Botswana, from desert to Delta and plains to rivers, all in one of its most abundant and remarkable seasons.
- Accommodation is in old-style serviced camping as well as luxury Wilderness Classic camps.
- A combination of fully serviced Adventurer and Discoverer camps gives you the complete sublime "back to nature" feeling of an Exploration.
- We have exclusive access to the wilderness areas of the Okavango Delta, Linyanti/Chobe and Victoria Falls.
- An experienced, knowledgeable and passionate guide leads the Exploration throughout.
- The air and road transfers showcase the vast wilderness and denizens of Botswana and enhance the beauty and magnitude of your journey.

## ITINERARY

### **Days 1 – 3: Deception Valley Adventurer Camp, Central Kalahari Game Reserve**

Upon your arrival at Maun Airport, you will be met by your guide and fly by light aircraft to the Central Kalahari Game Reserve where our adventure begins. From here, we take in the scenery on a three-hour game drive to our first camp. Explore the fascinating area during its most abundant season.



### **Deception Valley Trails Camp, Central Kalahari Game Reserve**

Deception Valley Trails Camp is set in Deception Valley, a prehistoric riverbed flanked by petrified dune lands. The area is very appealing after brief rains, when it is covered with nutritious grasses that attract vast herds from all over the enormous reserve. These large congregations of desert wildlife with their young are followed by opportunistic predators. Allowing for a sublime 'back to nature' desert experience, accommodation is in 3 metre x 3 metre (9.84 feet x 9.84 feet) dome tents, complete with mini-verandas. Pure cotton linen (with duvets) on GI stretchers, bedside table with silver lantern and mini luggage benches finish the interior. The bathrooms are en-suite, canvas-wraparound and open-air, with the entrance via a zip door at the rear of tent. In addition to the short-drop toilet, your bathroom sports an old-style tin bucket shower – with hot water available whenever you should require it. There is a separate toilet near the main area available for use during the day. In the main area, evening campfires are the norm, while hurricane lanterns add to the atmosphere.

#### **Did you know?**

- We have specifically allowed for a 3-night stay to give you time to relax and unwind as well as enjoy extended day trips to wilderness areas off the beaten track.
- Extended wildlife game drives (with picnic lunch) take in the game-rich Piper's Pans area of the Kalahari, as well as the Letiahau and Deception Valleys.
- Predators which can be seen are lion, cheetah, black-backed jackal, bat-eared fox and African wild cat. The rare and seldom seen brown hyaena is also sighted from time to time!
- Birdlife is prolific, with over 400 species in the region.

**Included:** All meals, activities and local drinks (excluding premium import brands)

### **Days 4 – 6: Gomoti Tented Camp, Santawani Concession**

After a light breakfast we depart overland to Maun (approx. 6 hours), after which we fly by light aircraft to the southeast paradise of the Okavango Delta. Enjoy a classic Okavango land experience with floodplains filled with general game and predators.



### **Gomoti Tented Camp – Santawani Concession Wilderness Explorations**

Gomoti Tented Camp lies in the centre of the private 6,000-hectare Santawani Concession, in the southeast corner of the Okavango Delta. The camp is nestled under large acacia trees in a diverse game-rich area. Most of the concession area comprises a mixed woodland habitat that gives way to open grasslands which can transform into floodplains in years of plentiful water.

Accommodation is in five 5.1 x 3 metre Savannah canvas tents, which are spacious and comfortable, designed to recreate the style of the early explorers, with richly-coloured teak director chairs and comfortable interiors. Separate bedside tables with 12-volt reading lamps, wooden-framed wardrobes, comfortable twin beds and mirrors are provided. A private, en-suite toilet and shower forms part of the structure. Enjoy the midday view from your director chairs, set under the shade of your veranda. Paraffin hurricane lanterns and a crackling campfire set the ambience in the evening, while fresh, sumptuous meals are prepared by your warm Explorations staff and served at a long table in the thatched dining area. An after-dinner digestif may be enjoyed around the fire or taken in the cosy lounge adjacent to the dining area.

#### **Did you know?**

- Activities focus around day and night game drives and nature walks.
- The alluvial sands in these areas are very fertile, resulting in good grass growth, which attracts a multitude of grazing animal species.
- Wildlife is plentiful and includes leopard, lion, wild dog, cheetah, giraffe, elephant and masses of general game.

**Included:** All meals, activities, laundry and local drinks (excluding premium import brands)

### **Days 7 – 9: Linyanti Discoverer Camp, Linyanti Concession**

After a light breakfast, we fly northeast to the private Linyanti Concession. Discover the varying habitats and wildlife of the area and bed down in our Discoverer camp.



### **Linyanti Discoverer Camp, Linyanti Concession Wilderness Explorations**

Set in the 125,000-hectare Linyanti Concession bordering Chobe National Park, Linyanti Discoverer Camp is your base from which to explore this enormous wildlife-rich area. Unrivalled in its remoteness and space, the concession is bisected by an ancient watercourse – the now-flowing Savute Channel. Your innovative accommodation is in 6.3 metre x 3.5 metre (20.67 feet x 11.48 feet) walk-in wooden framed canvas sided tents. The tents are airy and designed to recreate the accommodation style of the early explorers, with richly coloured teak director chairs and minimalist interiors. Separate bedside tables with 12-volt reading lamps, canvas and wood wardrobes, bathrobes, comfortable beds and mirrors are provided. Private, en-suite separate toilet and showers form part of the structure. Paraffin hurricane lanterns and a crackling campfire set the ambience in the evening, while fresh, sumptuous meals are usually prepared around a fire by warm and friendly camp staff.

#### **Did you know?**

- The landscape of the Linyanti is diverse, from floodplains to open dry-land savannah and woodland with sweeping views.
- Wildlife includes the seldom-seen sitatunga that can be spotted in the waterways, as well as rare roan and sable antelope, plains game and of course their predators, the lion and leopard – with the endangered wild dog as an incredible bonus.
- Activities include game drives in the private northern sector of the concession, exploring a range of habitats, from riverbanks to scrub and forest as well as a full-day excursion with lunch at a remote scenic setting.

**Included:** All meals, daily activities, limited laundry and local drinks (excluding premium import brands)

#### **Day 10: Toka Leya Camp, Mosi-oa-Tunya National Park, Zambia**

After a short morning drive and breakfast, we depart by light aircraft to the northern region of Chobe National Park.

Enjoy a leisurely shaded boat cruise along the Chobe River, with a light lunch, offering a unique opportunity to observe puku, enormous herds of elephant, numerous pods of hippo and large crocodiles, as well as other general game and diverse birdlife.

After clearing customs and immigration, we make our way to the Zambezi River.



#### **Toka Leya Camp – Victoria Falls, Mosi-oa-Tunya National Park Wilderness Safaris – Classic Camp**

Set on the western sector of the Mosi-oa-Tunya National Park, Toka Leya Camp perches on the banks of the precipitating Zambezi River. Only 12km upstream from the world-renowned Victoria Falls, the camp is well placed for you to explore the scenic and vibrant region. Limiting our footprint on this pristine land, wooden walkways snake between the 12 spacious en-suite safari-style tents. You will feel safe and comfortable in your tastefully decorated room with an

expansive wooden deck looking out at the mighty river – often presenting the sight of rambling elephants, grunting pods of hippo and idle crocodiles. Under a canopy of shady trees, the camp's dining, lounge and bar areas plus infinity pool, offer ample space for you to relax.

#### **Did you know?**

- Toka Leya has a worm farm and indigenous nursery so as to rehabilitate the plant species of the area.
- The densely vegetated islands in front of camp form part of the braided channel of the Zambezi River.
- 'Mosi-oa-Tunya' is the local name for Victoria Falls, literally meaning 'the smoke that thunders' which accurately describes the rising spray that can be seen 30km away.
- Activities include a river cruise.
- The park offers good wildlife viewing of buffalo, giraffe, zebra, impala and white rhino.
- The prolific bird life includes the African Finfoot, a rarity elsewhere, yet here a resident.

**Included:** All meals, daily activities and local drinks (excluding premium import brands)

#### **Day 11: Victoria Falls**

As a grand finale, we visit one of the Seven Natural Wonders of the world. Bid farewell to the adventure as we transfer by road to Harry Mwanga Nkumbula International Airport (Livingstone Airport).

#### **2016 Costs**

##### **Land Cost**

The Botswana Summer Encounter operates with a maximum of 8 guests per safari.

January 19 – April 30 and  
November 17 – December 19

US\$7,100.00 per person sharing  
US\$108.00 single supplement

#### **SAFARI INCLUDES:**

- Accommodation on a per person sharing basis
- All meals from dinner on Day 1 to the end of the scheduled safari.
- A reasonable amount of soft drinks, mineral water, fruit juice, house wine and beer, as well as local spirits such as gin and Amarula while on safari
- National park fees
- Laundry (excluded at Deception Valley Adventurer Camp)
- Road transfers
- Scheduled activities
- Internal charters on a seat-rate basis

#### **SAFARI EXCLUDES:**

- Flights (other than specified in the detailed itinerary)
- Visas
- Compulsory comprehensive insurance
- All relevant entry and departure government taxes
- All personal purchases, including curios, spirit liquors, telephone calls etc.
- Laundry at Deception Valley Adventurer Camp
- Pre and post safari tours

- All other travel arrangements pre or post safari
- Any new government taxes, levies, fuel or industry increases which are beyond our control
- Optional extra activities/ services not included in the detailed itinerary
- Gratuities